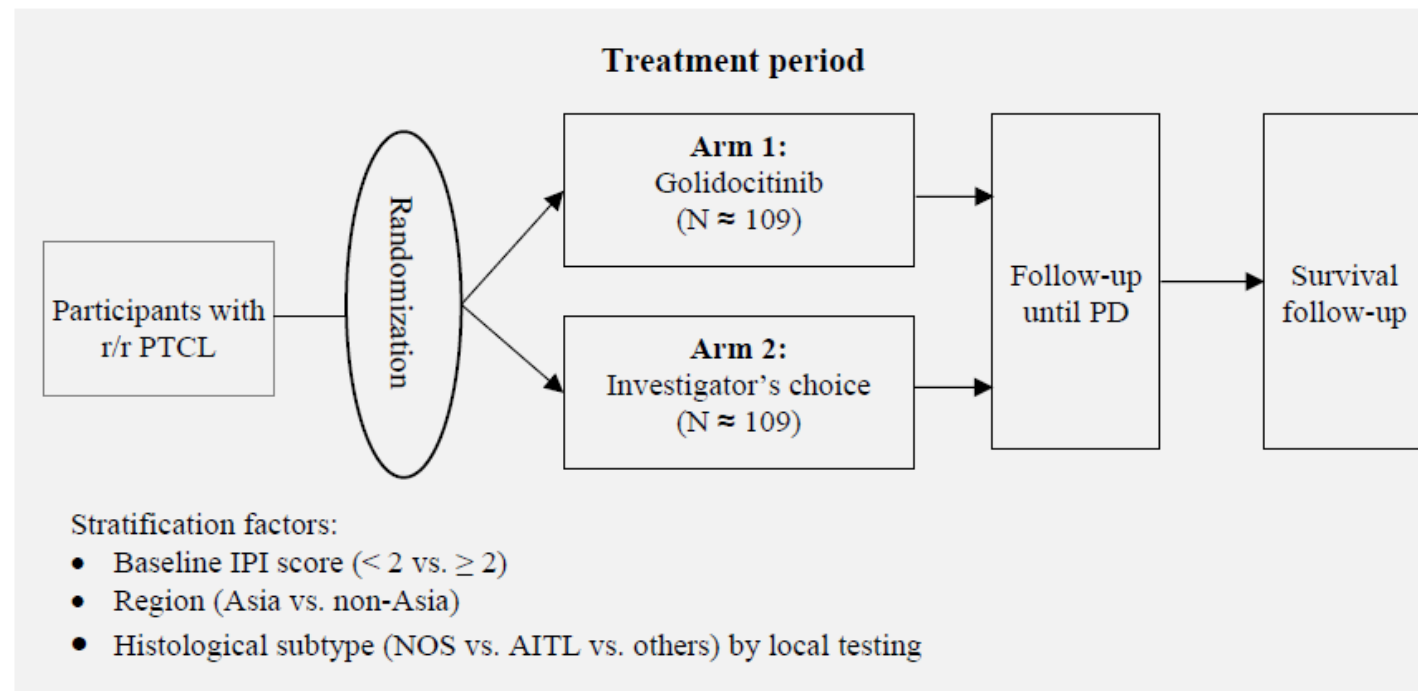


Figure 1. Study flow chart



Abbreviations: r/r PTCL, relapsed/refractory peripheral T-cell lymphoma; IPI, international prognostic index; NOS, PTCL-not otherwise specified; AITL, Angioimmunoblastic T-cell lymphoma; PD, progressive disease. Note: Participants will be randomly assigned in a ratio of 1:1 to receive golidocitinib or investigator's choice until disease progression, unacceptable toxicity, other discontinuation criteria have been met, maximum duration of treatment (applicable to arm 1), or withdrawal from the study. For participants who discontinued from study treatment for any reason other than disease progression, every effort should be made to ensure participants continue to be followed up for efficacy assessments per protocol defined schedule until disease progression. After disease progression, participants will be contacted every 3 months (\pm 7 days) to collect survival information.